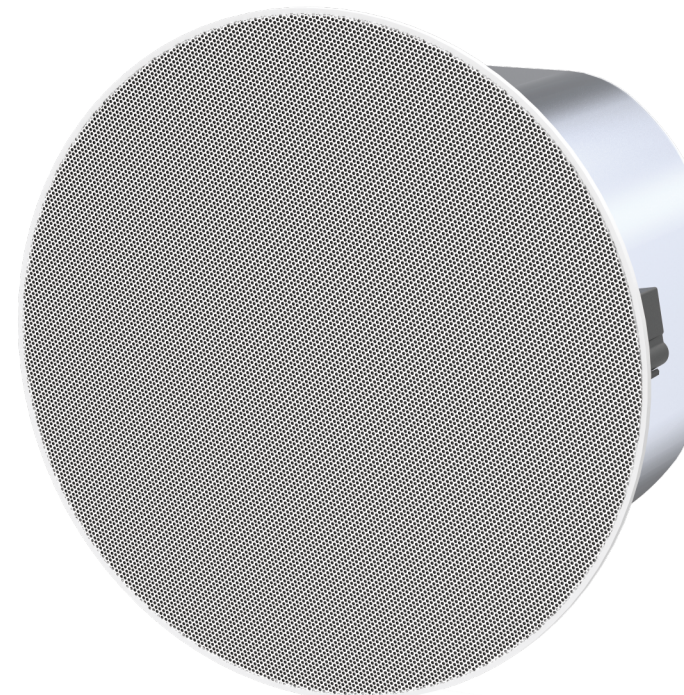


**DENON**  
*PROFESSIONAL*

**DN-26C**

6.5" CEILING SPEAKER SYSTEM

**DENON**  
*PROFESSIONAL*



Before connecting and using this product, please read this manual carefully for proper operation.  
This manual is an integral part of this product  
The product must be installed in accordance with the manual and relevant safety precautions.

## Important Safety Instructions

1. Read these instructions.
2. Keep these instructions.
3. Heed all warnings.
4. Follow all instructions.
5. Do not use this apparatus near water.
6. Clean only with a dry cloth.
7. Do not install near any heat sources such as radiators, heat registers, stoves, or other apparatus (including amplifiers) that produce heat.
8. Only use attachments/accessories specified by the manufacturer.
9. Do not expose this apparatus to dripping or splashing and ensure that no objects filled with liquids, such as vases, are placed on this apparatus.



The lightning flash with arrowhead symbol, within an equilateral triangle is intended to alert the user to the presence of uninsulated “dangerous voltage” within the product’s enclosure that may be of sufficient magnitude to constitute a risk of electric shock to persons.



The exclamation point within an equilateral triangle is intended to alert the user to the presence of important operating and maintenance (servicing) instructions in the literature accompanying the appliance.



The asterisk within an equilateral triangle is intended to inform the user to necessary installation or removal instructions regarding equipment or hardware use relating to the system.

## Precautions



- Do not use DN-26C ceiling loudspeakers in an environment where temperatures exceed +40°C (104°F).



- Never expose a DN-26C ceiling loudspeaker to rain, water, or high moisture.



- Denon Pro DN-26C ceiling loudspeakers are easily capable of generating sound pressure levels sufficient to cause permanent hearing damage to anyone within normal coverage distance.

Caution should be taken to avoid prolonged exposure to sound pressure levels exceeding 90 dB.

## Sound Level

Permanent hearing loss may be caused by exposure to extremely high noise levels. The U.S. Occupational Safety and Health Administration (OSHA) has specified permissible exposures to certain noise levels. According to OSHA, exposure to high sound pressure levels (SPL) in excess of these limits may result in hearing loss. When using equipment capable of generating high SPL, use hearing protection while such equipment is under operation.

Hours per da y	SPL (dB)	Example
8	90	Small gig
6	92	Train
4	95	Subway train
3	97	High-level desktop monitors
2	100	Classical music concert
1.5	102	Riveting machine
1	105	Machine factory
0.5	110	Airport
0.25 or less	115	Rock concert

## Description

Thank you for purchasing DN-26C Premium Ceiling Speakers. Read through this manual to familiarize yourself with the features, applications, and precautions before you use these products. DN-26C Premium Ceiling Speakers use innovative design and materials to provide highperformance in a flush-mount ceiling format.

## System Features

### DN-26C — 6.5-inch Premium Ceiling Speaker

Denon Professional’s range of ceiling loudspeakers is designed to deliver exceptionally accurate, articulate sound while easily meeting commercial requirements for fire-resistance and suitability for multiple unit installation.

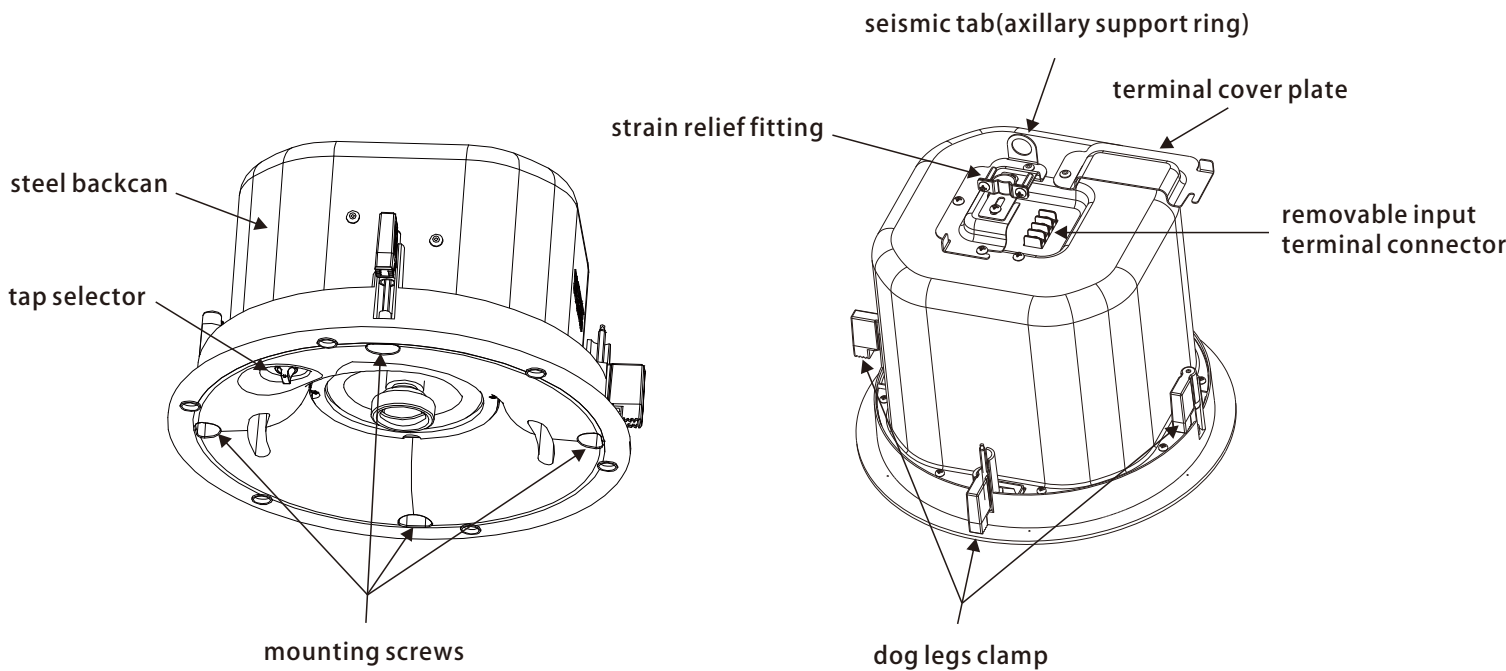
All three models feature a metal rear enclosure, which provides a fire barrier behind the speaker to meet commercial fire codes. It also serves as the woofer’s enclosure to optimize its bass tuning and low frequency response. The speakers have 70/100-volt transformers to facilitate multiple unit installations without the impedance and level-matching concerns of paralleled transformerless speakers.

There are three different size models with 4-inch, 6.5-inch and 8-inch woofers. All three utilize high quality drive units in tuned reflex enclosures and precision electronic crossovers to deliver clean, detailed sound, perfect for music, public address applications and business/educational presentations, while meeting all safety and fire codes as required by commercial venues.

### FEATURES

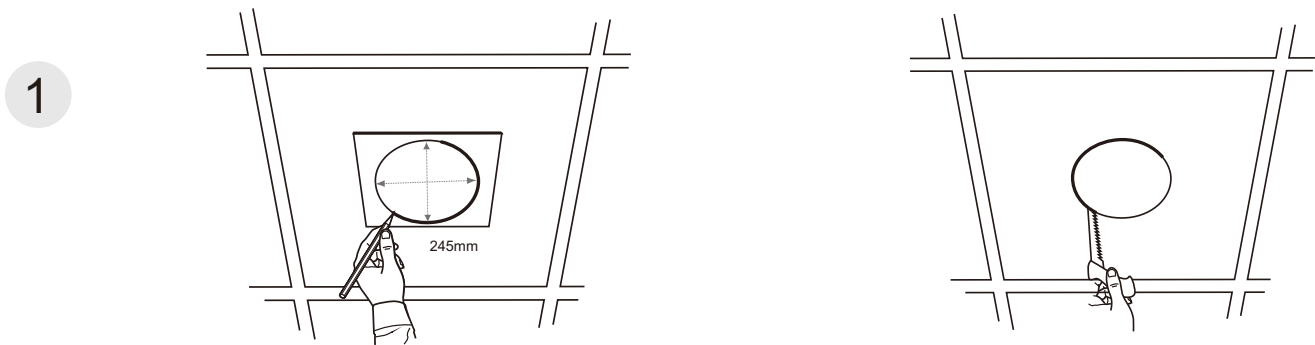
- Ultrathin fireproof cover design.
- Magnetic suction type grille, easy to disassemble.
- Integrated design used in various places.
- Wide dynamic range can keep in large volume output without distortion.
- With steel fire dome.

Product feature identification

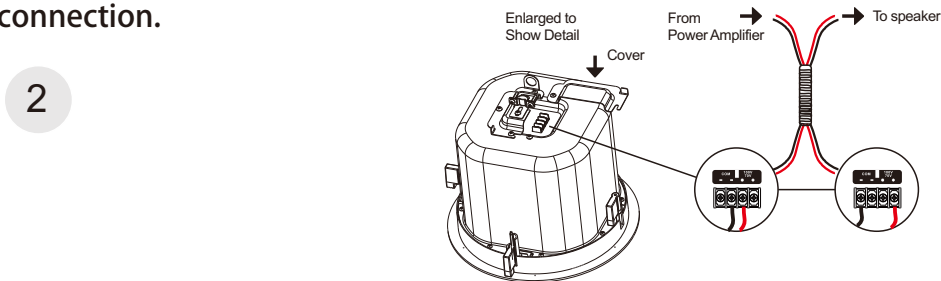


Frame Construction Ceiling Installation

1,Take the cutout template from the packaging box and punch out along the larger perforated circle. Place the cutout template against the bottom of the ceiling and trace the inside of it. Carefully cut out the ceiling material along the circle.

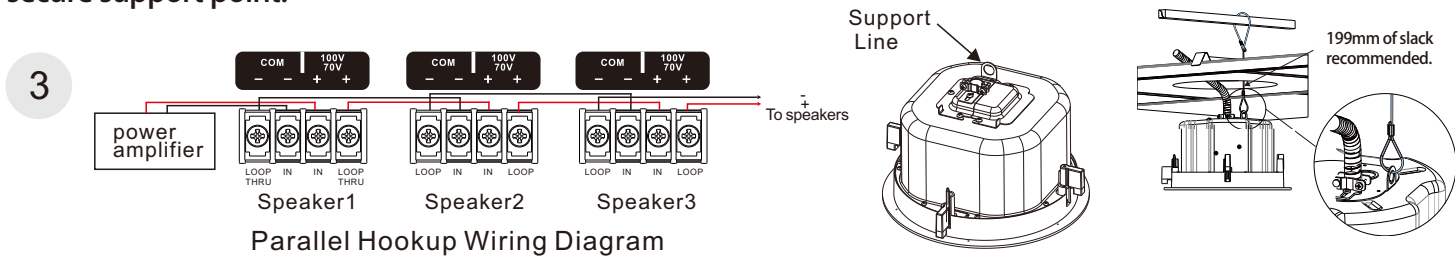


2, Remove the top cover to contact the 4-position screw-terminal barrier strip on the back of the speaker. Connect the speaker wire to the 4-position screw-terminal barrier strip. Install the catheter and secure the connection.



Recommended Configurations

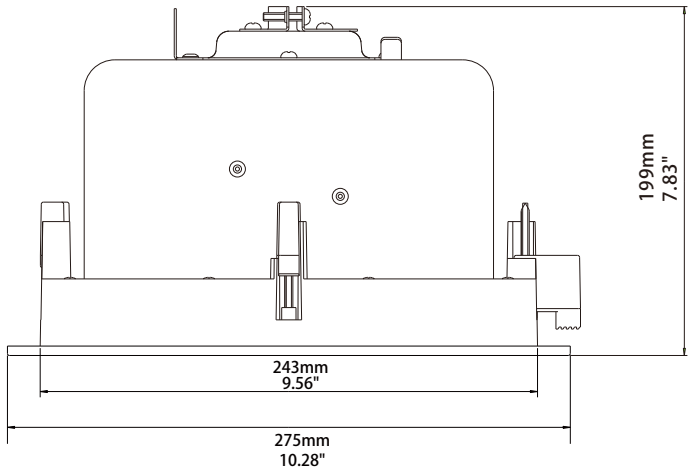
3, Replace the top cover and tighten the screws. connector a secondary support line from the seismic tab to a secure support point.



4, Remove the grille and set the rotary tap selector switch. insert the speaker through the bottom of the hole in the ceiling.

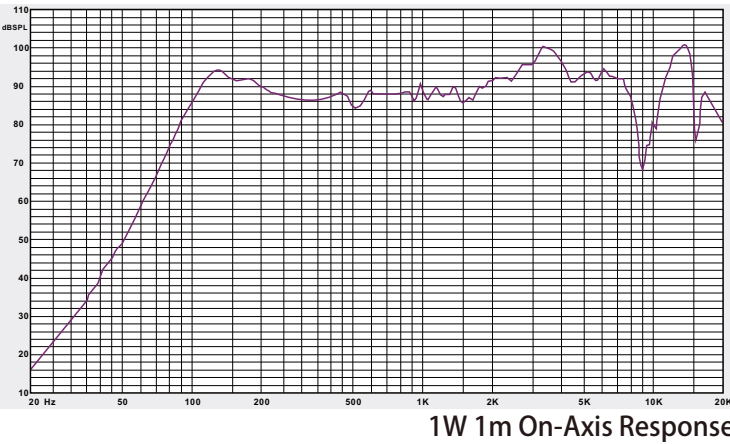


Product size diagram:

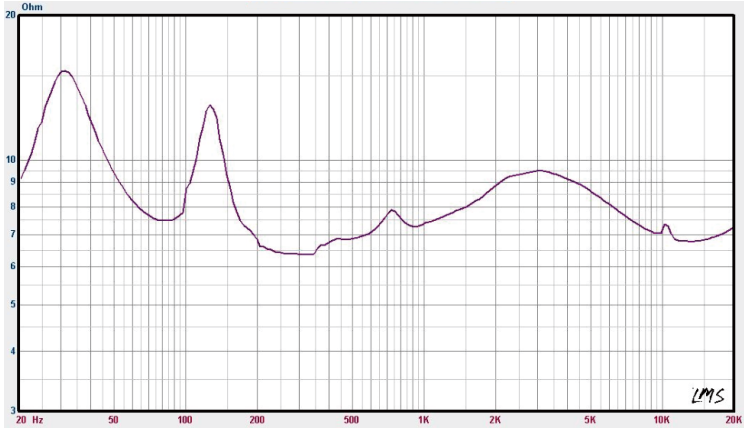


Frequency response and impedance

Frequency response



Impedance



DN-26C Performance Ceiling Speakers

Technical data

	DN-26C
Frequency Range (-10 dB):	86 Hz - 20 kHz
Coverage Angle:	H90° x V90°
Power Handling:	Rating 50W, Program 100W, Peak 200W
Sensitivity (SPL 1 W/1 m):	88 dB
Maximum SPL:	100 dB
Impedance:	8 ohms
LF Transducer:	6.5 in
HF Transducer:	1" soft dome tweeter
Transformer Taps:	70V: 15W, 7.5W, 3.75W, 1.9W, 1W,8 ohm 100V: 30W, 15W, 7.5W, 3.75W,1.9W8 ohm
Connectors:	4-position screw-terminal barrier strip
Enclosure:	ABS Plastic Baffle, steel back can
Grille:	Color matched steel grille with fabric
Dimensions (H x Dia):	275 mm x 199 mm (10.28 in x 7.83 in)
Cutout Size:	245 mm (9.64 in)
Net Weight:	3.3 kg (7.27 lb)
Shipping Weight:	4.5 kg (9.92 lb)
Accessories:	Owner manual,1PC Warranty card, 1PC